



MUSIC THEATRE
INTERNATIONAL

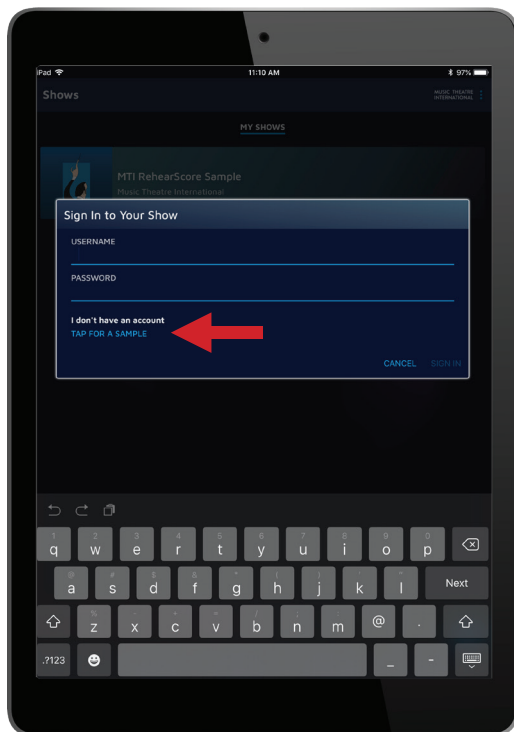
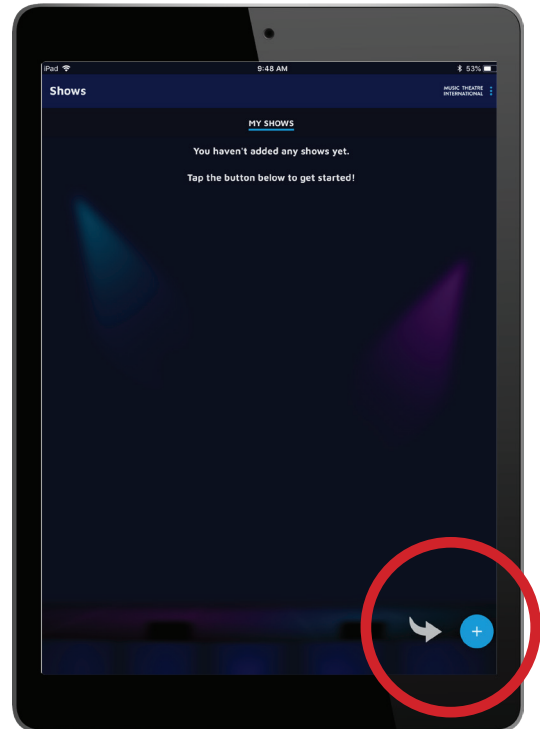
WELCOME TO THE NEW REHEARSCORE® (APP)



ACCESS & ACTIVATION

The first step in accessing the new RehearScore® (App) is downloading the application itself! This can be done directly on your phone or tablet via the Google Play Store ([LINK](#)) or the App Store ([LINK](#)) for free!

Once the application is downloaded, open the app and tap on the “+” button in the bottom righthand corner. Here, you will be prompted to enter your show’s USERNAME and PASSWORD. These login credentials will be emailed to you immediately after purchase of the product at mtishows.com or after your initial License Contract is executed by your MTI Account Representative.



If you have not yet purchased RehearScore® for your booking but you’d like to try the application, you may also select TAP FOR A SAMPLE to receive a demo.

Now, Let’s get started with RehearScore®!

GETTING STARTED

Once the Activation Code is accepted, the entirety of your show's Piano/Vocal Score will download directly to the device and will be available for use on or offline.

As a Show Owner, you will see three (3) separate options inside of your show.

- **Songs:** A list of every song, reprise, transition, and underscore in the show labeled by its corresponding numerical header. Tap on the track you're looking to access to open the Song Screen.
- **Invitations:** Here, the Show Owner(s) can share access to members of the cast and crew. Each tier of access has a few different options for use.
- **Access:** Here, a Show Owner will see a listing of each individual using the app divided by the three (3) access levels.

Access to the application is divided into three separate categories:

1) **Show Owner:**

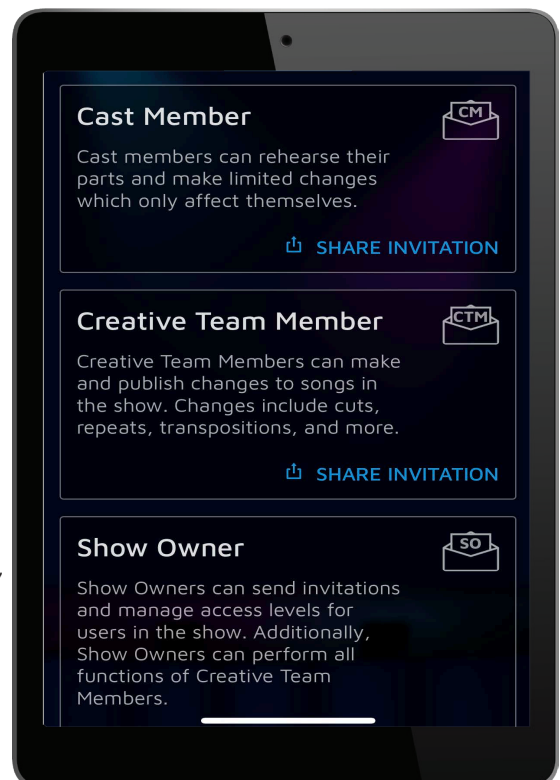
- This access level gives complete access to the RehearScore® (App) allowing the user to send invitations to any member of the cast, crew, or creative team and manage access. Additionally, Show Owners can perform all functions of the Creative Team. You may have up to three (3) Show Owners on any given show.
- The initial code received after purchase will be the Show Owner's Activation Code.

2) **Creative Team Member:**

- This access level offers the ability to make any changes / edits to any song in the show and publish them for all users. You may have up to three (3) Creative Team members on any given show.

3) **Cast Member:**

- This access level offers the ability to rehearse the show and make limited changes which only affect their specific. There is no limit to the amount of Cast Members that may access this level of the app.
- *TIP:* For a simpler way to share the invitation code, we recommend clicking the share button and selecting "COPY." After selecting COPY, you may then paste the appropriate login information into any document or email of your choice.



THE SONG SCREEN

The Song Screen is the universal display screen for each song. Here, we will discuss each proponent of the Song Screen.

1 JUMP TO A SECTION

Right below the song's title, you'll find a dropdown menu labeled "JUMP TO A SECTION." Here, you'll find any markers in of a song, often titled by Cue line (Measure # / Beat #). To Jump to one in particular, simply tap on that title.

In the center of the screen, you will see four (4) separate pieces of large white text. The top two numbers correspond with the score placement itself while the bottom two represent each track's adjustable variables.

2 MEASURE NUMBER (Top Left)

The measure number represents the placement of a specific measure number inside of each song. The number will correspond with the appropriate measures numbers in all of your scores (vocal or instrumental).

- To jump to a specific measure number, tap on the word MEASURE and enter the desired number. Then, tap GO.

3 BEAT NUMBER (Top Right)

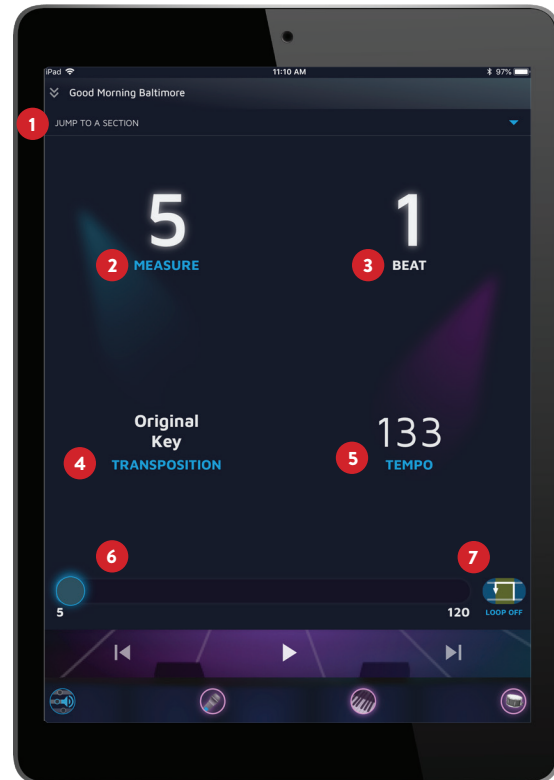
The beat number represents the beat inside of each corresponding measure. Whether in 4/4, 3/4, or 7/8, the exact beat number will move right along in sync with the measure numbers. *Please note: the beat numbers **cannot** be adjusted.*

4 TRANSPOSITION* (Bottom Left)

Here, you will be able to adjust the key of any particular song (by half steps up or down) to find the best fit for your performers.

- To transpose a song, tap on the word TRANSPOSITION.
- Next, you will see a "+" and a "-" button. Each time you tap these, the song will shift up or down a half-step.
- Once you've found the desired key, hit the "X" button to return to save.
- If you'd like to return to the song's original key, simply tap and hold "HOLD TO RESET."

**Please note: While RehearScore® has the ability to transpose every song, not every show's license allows for these types of changes. Please contact your representative to guarantee that your particular show may be transposed.*



5 **TEMPO** (Bottom Right)

Here, you may adjust the speed of each song.

- Tap on the word “TEMPO” to see your options.
- You may increase or decrease the tempo by tap the corresponding “+” or “-” button to shift the speed by percentage.
- You will notice that both number and percentage adjust accordingly.
- If you’d like to return to the song’s original tempo, simply tap and hold “HOLD TO RESET.”

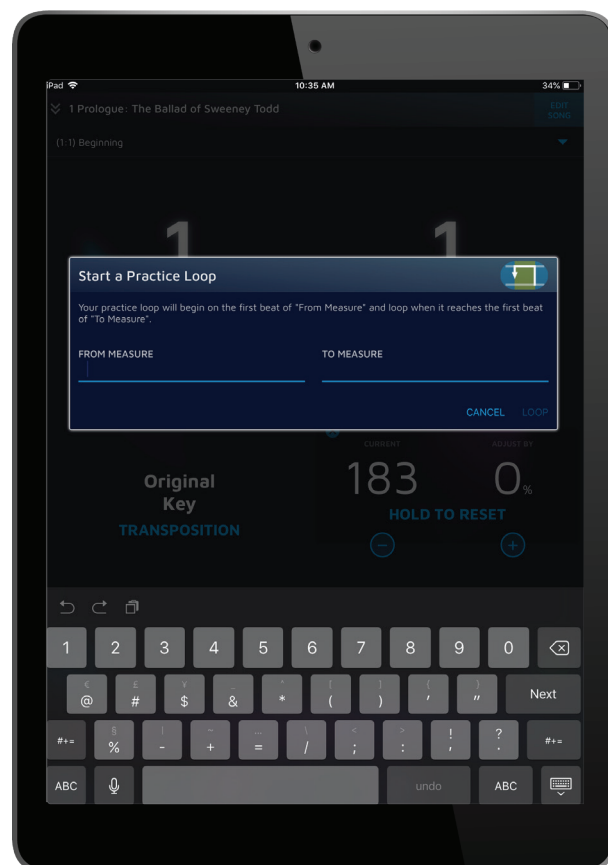
6 **SCRUBBER**

Below these four options, you’ll find the SCRUBBER. You may slide the scrubber to skip to any part of your current song. You’ll notice to the far right of the scrubber the number one (1) or the letter (A). This number represents the first measure of a song or the first measure of a vamp. The number on the far right of the scrubber will always match however many measures are in the song itself. The BACKWARD and FORWARD buttons are your quick way to move back and forth between adjacent songs.

7 **LOOPING**

To the far right of the scrubber, nearest the ending measure number, you’ll see a graphic with the words LOOP OFF / LOOP ON. The menu that pops up is your way to control particular practice loops. Different from a predetermined Vamp or Repeat, this section allows you to loop particular sections in rehearsal.

For example, to loop a dance break, locate the beginning and ending measure numbers of the section you’d like to loop and enter those in the “FROM MEASURE” to “TO MEASURE,” then tap the “LOOP” button to return. To cancel, tap “CANCEL.”



ADJUSTING THE PLAYBACK

*At the bottom of each song's screen, you'll see four (4) circular Toggle Switches each representing a particular volume / track you may adjust.

PLAYBACK

Here, you may adjust / mute any of track of three main categories.

For Mobile Devices: Please make sure your Ring / Silent Switch is turned on Ring when using the App.

1. VOCAL PARTS

- a. Each and every vocal line in the song will have a corresponding track (*Main characters, supporting characters, and each chorus sections*).
- b. You may slide the speaker logo to adjust the volume on each track.
- c. You can also tap the circle on the far left of each line to completely mute the track.

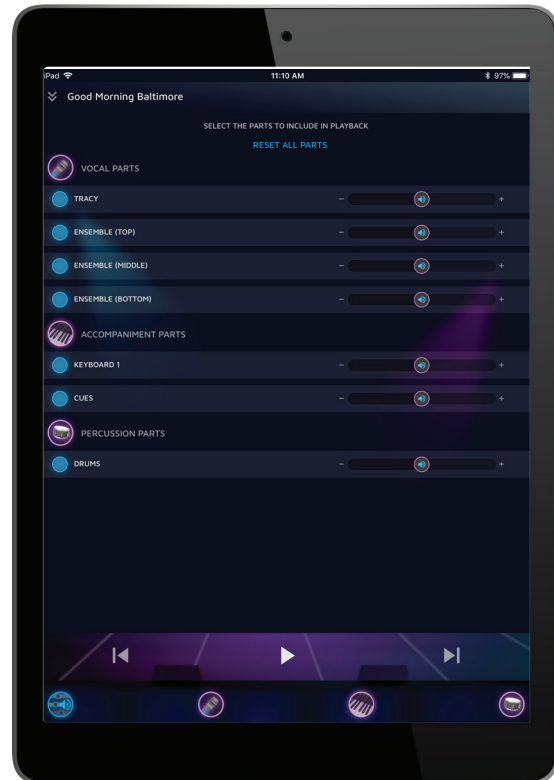
2. ACCOMPANIMENT PARTS

- a. Because RehearScore® is a digitized Piano / Conductor Score, you will always see the PIANO along with the occasional FILL or CUE parts.
- b. You may adjust each track accordingly.

3. PERCUSSION PARTS

- a. Some scores will have a strong percussive section. In that case, you will be able to adjust the volume of the drums / beat here.

**Please note, Android® operating software does not support all of the features that run confidently on Apple iOS. Due to this, some Android devices will not display volume toggle options, only off / on.*



EDITING A SONG

If you are one of your show's administrators, you will have the ability to edit any of the songs in your show. In the top right corner of your screen, tap the EDIT SONG to bring up the EDITS MENU. Here, you can choose between types of EDITS.

MARKERS

MARKERS are titled sections of the score. These titles can be as simple as a lyric that begins a section or a more specific title that notates set changes, choreography choices, and more.

To add a Marker, tap the "+" in the bottom righthand corner and choose MARKER. Then, enter the title of the Marker you'd like to add with the corresponding measure. When you're finished, you may hit "SAVE" or "CANCEL."

CUT

A cut is the removal of a measure(s).

To add a Cut, tap the + in the bottom righthand corner and choose CUT. Then, enter the beginning and end measure numbers of the cut you'd like to make. When you're finished, you may hit "SAVE" or "CANCEL."

REPEAT

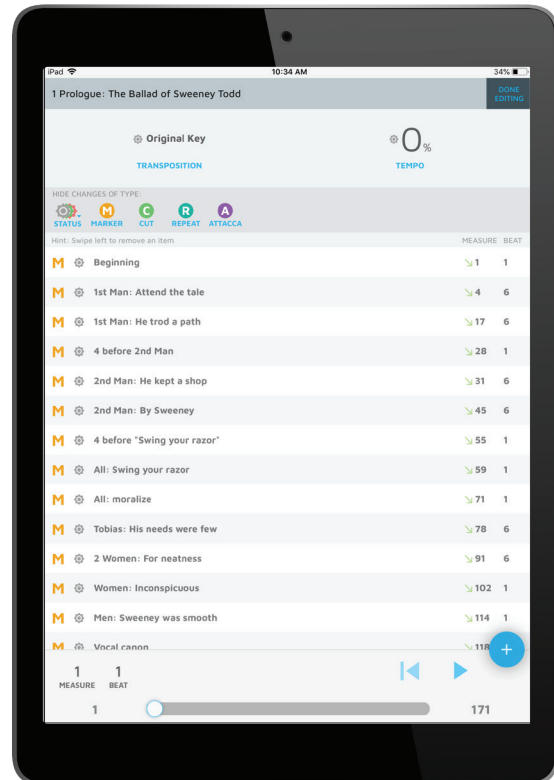
A repeat is a group of measures that repeat in a song. Some may already exist in the form of Vamps, Repeats, and Codas.

To add a Repeat, tap the + in the bottom righthand corner and choose REPEAT. Then, enter the beginning and end measure numbers of the repeat you'd like to make. If you'd like to make a vamp, use the same process while also adjusting the Play Count scrubber indicating how many times you'd like the section to loop. When you're finished, you may hit "SAVE" or "CANCEL."

ATTACCA

When selected, an ATTACCA signals the immediate start of the very next song.

To add an Attacca, tap the + in the bottom righthand corner and choose ATTACCA. Then, enter the measure number you'd like. When you're finished, you may hit "SAVE" or "CANCEL."



SAVING CHANGES

Once you've made your desired changes, tap on "DONE EDITING" in the top left corner. Here, you'll encounter a menu titled "Ready to Publish?" If you're uncertain about the changes you've made and would like to hold off on sharing them with the full cast, simply tap "SAVE FOR LATER." These changes will remain in the song's EDIT menu but will not play in the app yet. To solidify your edits and share them with the full cast and crew, tap "PUBLISH NOW." You may also type a note in the CHANGE NOTE (optional) section to send a detailed message to the cast and crew.

**Please note that while the RehearScore® can edit every song for rehearsal, changes in the any score's performance must be first granted permission from MTI. Please submit these Edit Requests in writing to your representative.*

For any additional questions or support, please contact your Account Representative at (212) 541-4684.

